

Planning Concepts and Resources

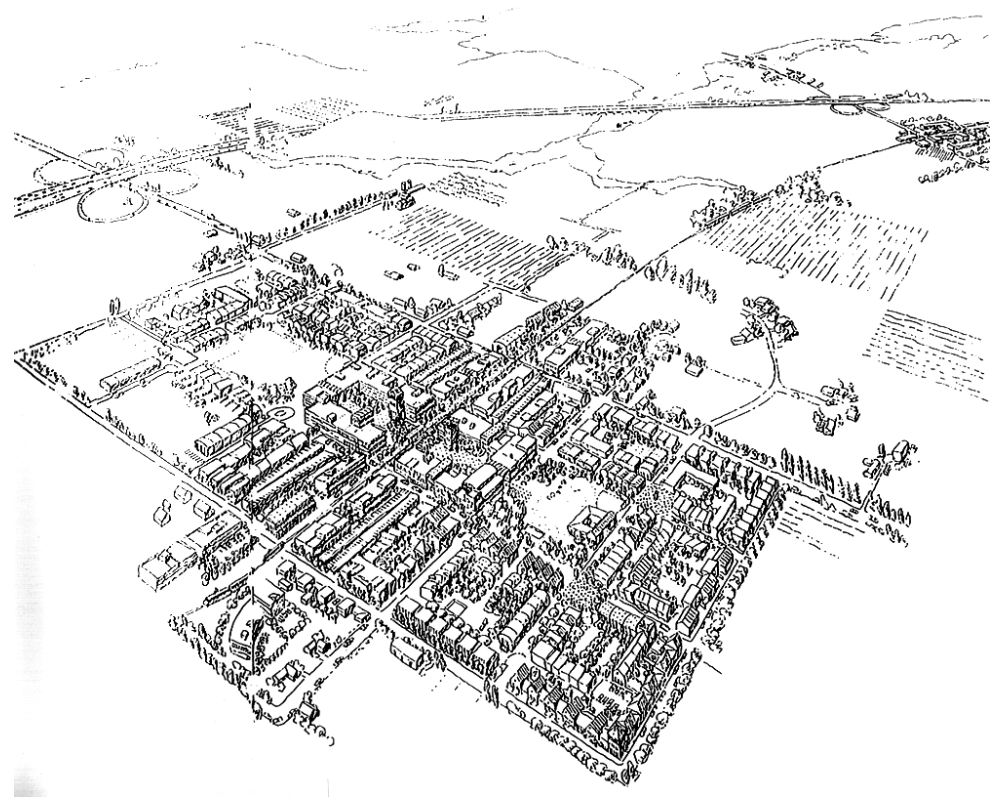
Planning Services Department

Planning Concepts

Ideas that Shape the Comprehensive Plan

Planning Terms and Concepts

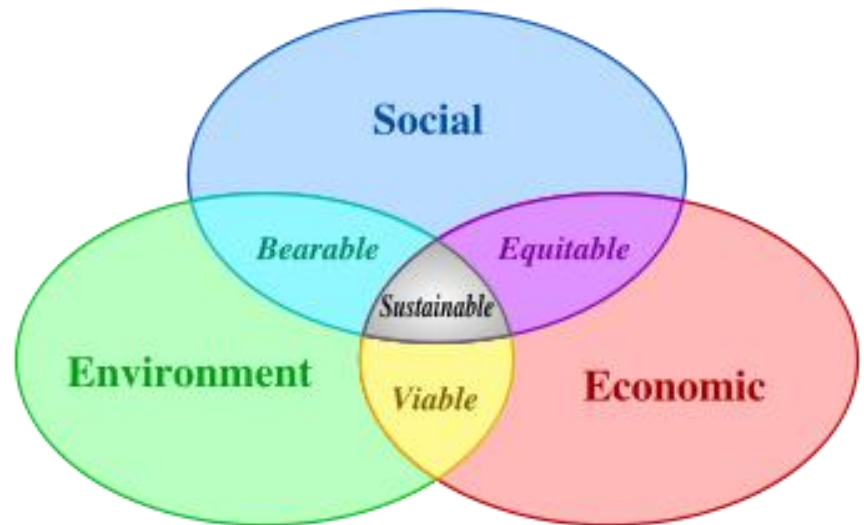
- Sustainability
- Smart Growth
- New Urbanism



Sustainable Development

□ Combats

- Pollution
- Social Inequity
- Ecosystem Destruction
- Urban Heat Islands



Sustainable Development (cont.)

- What Does this Look Like?
 - ▣ Restoration of Natural Environments
 - ▣ Efficient Land Usage
 - ▣ Non-motorized Transportation Options
 - ▣ Preservation of Culture and History
 - ▣ Community Involvement Opportunities



Smart Growth



- Reinvests time, attention and resources in restoring community to city centers and old suburbs
- Town-Centered
- Transit and Pedestrian Oriented
- Mix of Housing, Employment, Retail

New Urbanism

- Identifiable Center
- Playgrounds
- Parks
- Walkable
- Parking in Back
- Streets—Narrow and Tree Lined
- Variety of Housing Options
- Variety of Transportation Options



PLANNING RESOURCES

Tools to Explore Your City

Overview



- Comprehensive Plan
- Land use and environmental regulations
- Current planning
- Maps
- Other resources

Comprehensive Plan

- Available on the Planning Services Department Website
- www.spokaneplanning.org



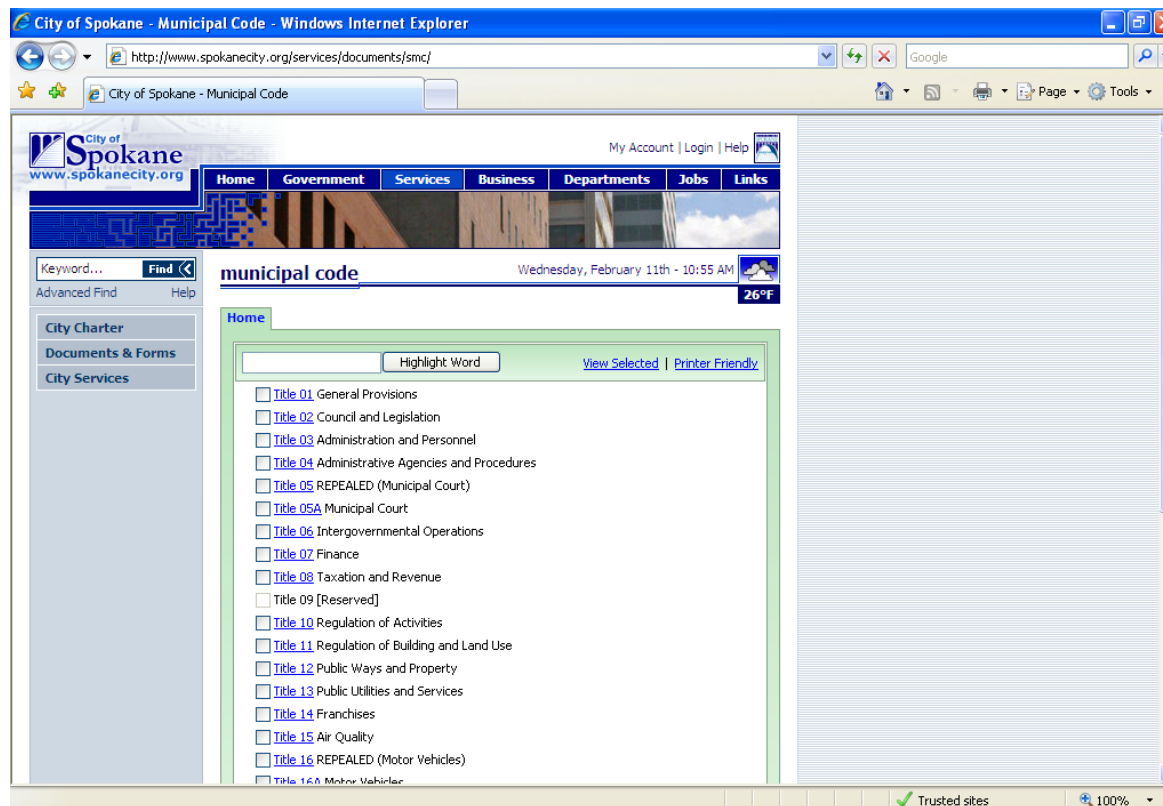
The screenshot shows the homepage of the Spokane Planning Services Department website. At the top left is the department logo, which includes the word "SPOKANE" above a stylized blue and white graphic of a dome or arch, followed by the text "PLANNING SERVICES DEPARTMENT". The main header image is a close-up photograph of a large, vibrant pink dahlia flower in full bloom, set against a background of green foliage and bright sunlight. Below the header is a horizontal navigation menu with seven blue buttons: "Home", "Current Planning", "Long Range Planning", "Design Review", "Plan Commission", "Forms & Documents", and "Contact Us".

Below the navigation menu, the page is divided into two main sections. On the left, under the heading "What's New?", there is a sub-heading "Updated June 24, 2011" and a paragraph stating: "The long awaited [Land Use Applications and Documents](#) page is updated! All individual forms and applications are available and complete packets are coming soon." Below this are three links: "PASS - updated", "Comprehensive Plan Amendments - updated", and "Plan Commission Meeting Information and Documents - updated". Under the heading "Hot Topics:", there is a link for "NOTICE OF PUBLIC HEARING AND SEPA DETERMINATION PROPOSED COMPREHENSIVE PLAN AMENDMENT TEXT AND LAND USE MAP CHANGES".

On the right side of the page, there is a search bar with a "Search" button and a checked checkbox labeled "Only search this website". Below the search bar is a "Quick Links" sidebar with a vertical green label "Quick Links" and a list of links: "City of Spokane Website", "Spokane City Map - Great resource!", "Spokane Municipal Code", "Comprehensive Plan - Revised 12/09", "Land Use Application Summary Sheets (PASS)", "Neighborhood Planning", "Shoreline Master Program Update", and "Infill Housing".

Land Use & Environmental Regulations

- City of Spokane Municipal Code
- www.spokaneplanning.org



Current Planning

- Application of regulations to development projects
- Planning Application Summary Sheets (PASS)

<http://www.spokaneplanning.org/PASS.html>



Planning Application Summary Sheets (PASS)

Listed below are one-page summary sheets for all of the active applications being processed by the Current Planning Section of the Planning Services Department. The types of applications included in the summary sheets are: plats, planned unit developments, conditional use permits, plans-in-lieu of compliance, variances and shoreline conditional use permits. They are grouped according to the application type. The Application Summary Sheets are updated weekly. If you have questions on an application, please contact the planner identified as processing the application.

[Click here for completed applications](#)

If you do not have a PDF Reader you may download one for free using the following link: [Get Acrobat Reader](#). Once you download and install the reader you should be able to view all the PDF files listed on this page.

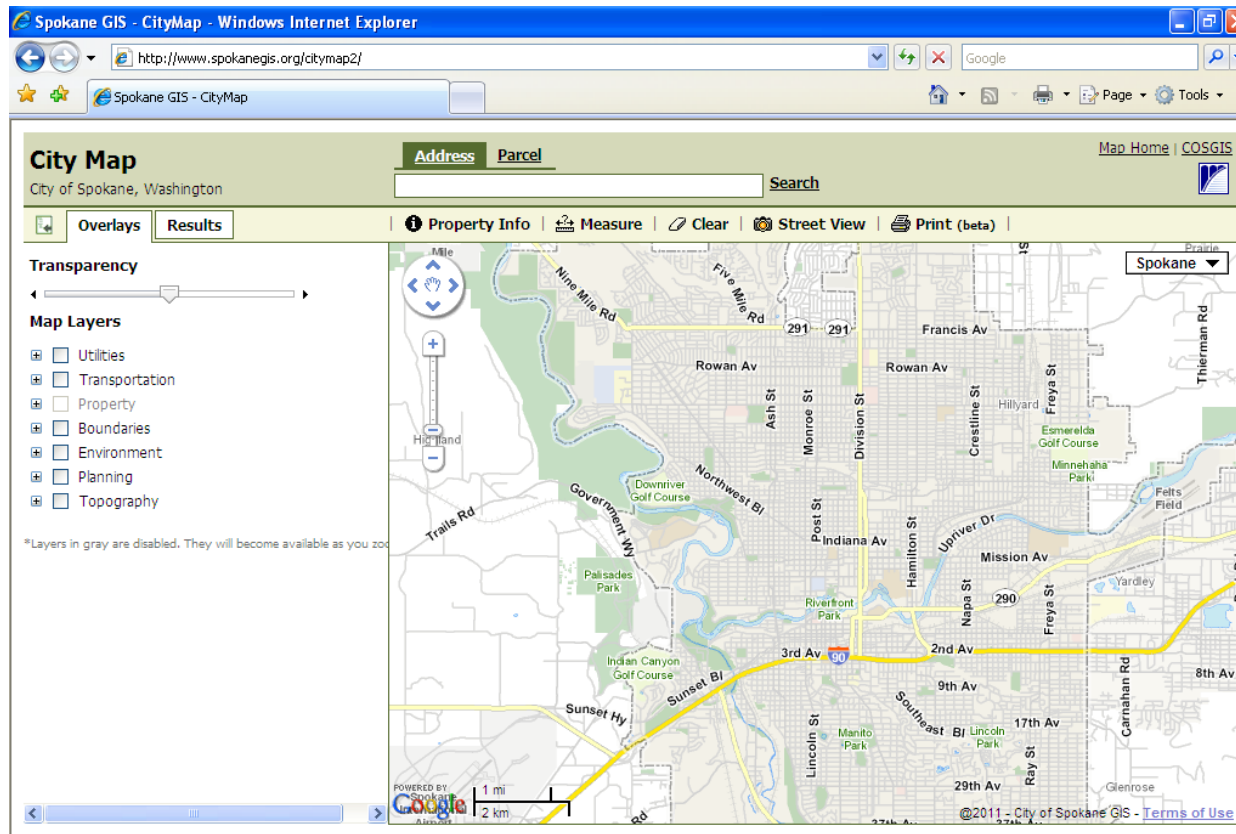
Only search this website

Quick Links

- City of Spokane Website
- Spokane City Map - Great resource!
- Spokane Municipal Code
- Comprehensive Plan - Revised 12/09
- FAQ - Frequently Asked Questions
- Land Use Applications (P.A.S.S.)
- Spokane Municipal Code
- Application Forms and Procedures
- Development Process (PowerPoint)

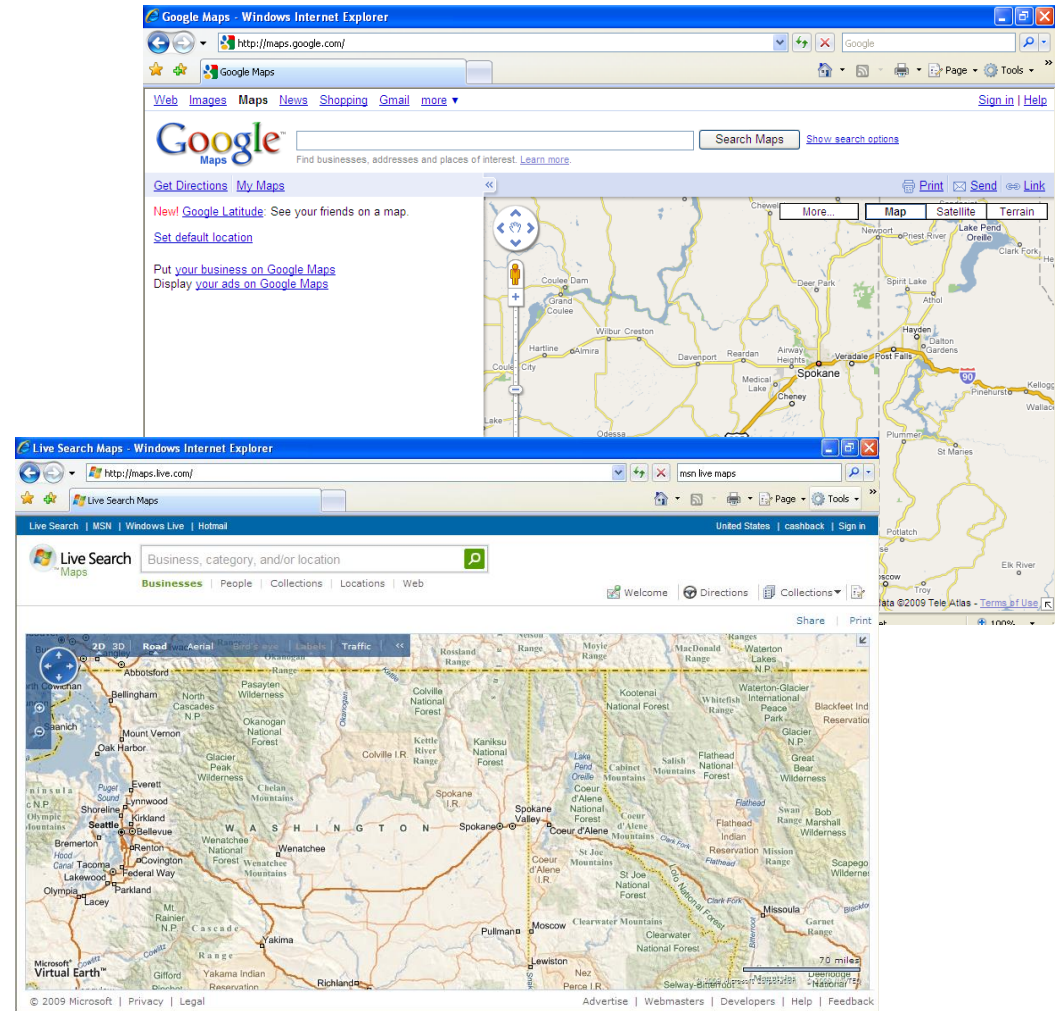
Maps

- Spokane City Map
- <http://www.spokanegis.org/citymap2/>



Online Maps

- Google Map
Street View
- Bing Maps
Search Maps
Birds Eye View



Regional Data

- Community Indicators Initiative of Spokane
 - <http://www.communityindicators.ewu.edu/>
- Office of Financial Management (OFM)
 - <http://ofm.wa.gov/>
- SmartRoutes Initiative
 - <http://www.smartroutes.org/>
- Site Selector
 - <http://www.selectspokane.com/>

Historic Research



- Spokane Library Northwest Room
- Joel E. Ferris Archives at the Northwest Museum of Arts & Culture (MAC)

FOR MORE INFORMATION

Visit the Planning Services Department
on the 3rd floor of City Hall
808 W Spokane Falls Blvd.

Or

Call 625-6300

www.spokaneplanning.org

